

## WEEKLY REPORT

*Keep an Eye on Changing Market Place.....*

01, DEC 2012

## Top Stories This Week

- ≈ REC to raise Rs 4500 cr via bond issue, issue opens Dec 3, close Dec 10.
- ≈ Indian Hotels MD Raymond Bickson said: To open our 100th hotel in Gurgaon, Year has been flat, have great expectations from Q3, Q4. Room rate, occupancy to increase in Q3, Q4. Opening a new hotel in north Africa in marrakech on Friday, Have another hotel under design in north Africa, Plans to open Beijing property in 2013.
- ≈ Leela Hotels : To retire Rs 2,000 cr of debt by december 2013 CDR is in place, will deliver on elements agreed upon, To sell land banks in Pune, Hyd, Bangalore, biz park in China, Asset light, mgmt contract to be our way forward', Signed 225 key luxury hotel over 35 storeys in Noida, Agreement with armani for luxury residences in place, To foray into wildlife resorts.
- ≈ IPO Corner: Bharti Infratel IPO dates: Dec 11 Dc 14, no. of shares offered in 18.89cr. -CARE Ratings IPO dates: Dec 7 Dec 11; Price band Rs. 700 750; no. of shares offered is 71.99lakh. -PC Jeweller issue opens of 10th, closes on 12th, no of shares 4.5 cr.
- ≈ Tata Steel in fray to buy 2 Arcelor Mittal furnaces in France.

## Weekly Indices Change

Index	Close	P. Close	Chg. (%)
SENSEX	19339	18506	4.50
NIFTY	5879	5626	4.50
MIDCAP	6901	6597	4.61
SMLCAP	7275	7057	3.09
METAL	10355	9801	5.65
OIL&GAS	8252	7987	3.32
AUTO	10814	10558	2.42
TECK	3527	3399	3.77
BANKEKX	13951	13178	5.87
IT	5888	5733	2.70
FMCG	6037	5815	3.82
HC	7946	7703	3.15
PSU	7177	7003	2.48
CD	8031	7476	7.42
POWER	1980	1920	3.13
CG	11080	10630	4.23
REALTY	1998	1869	6.90

## Global Indices

Index	Close	P. Close	Chg. (%)
DOW	13025	13009	0.12
NASDAQ	3010	2966	1.48
FTSE	5866	5819	0.81
NIKKEI	9446	9366	0.85
HANGSENG	22030	21913	0.53

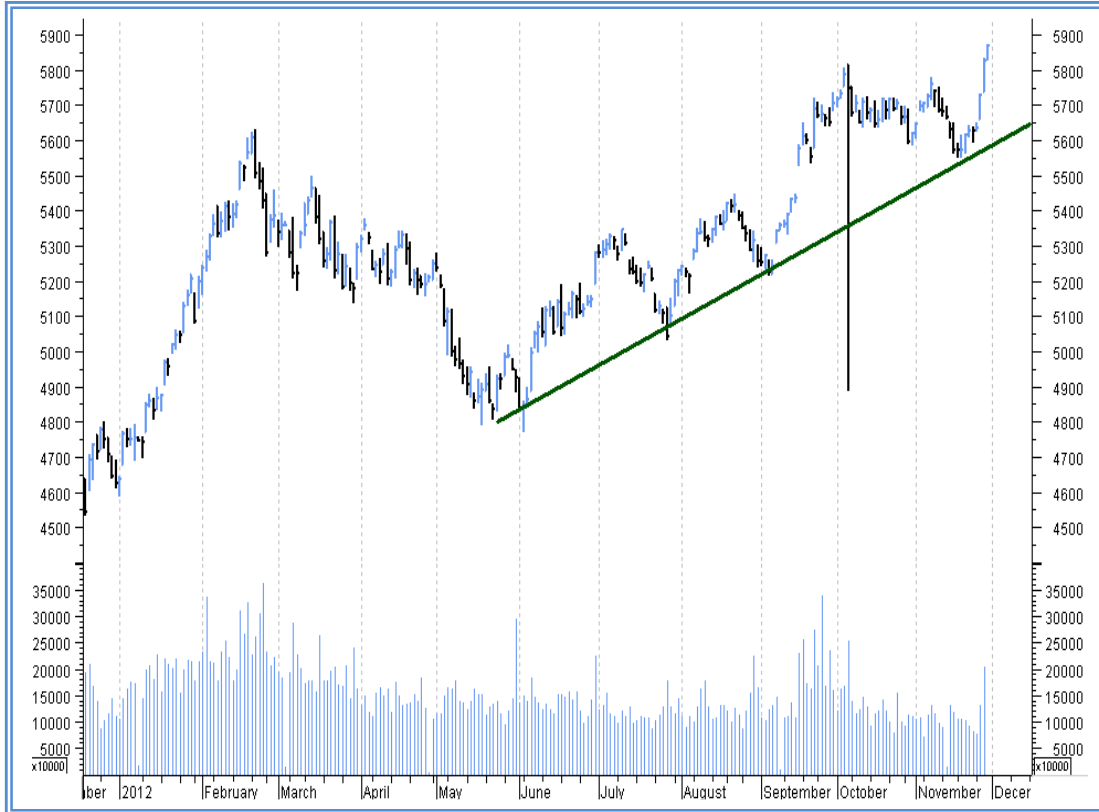
## Top Gainers Weekly

Scrip	Price	% Chg
BHARTIAIRTEL	337	10.85
SESAGOA	182	9.88
IDFC	173	9.60
HDFC	843	8.64
CIPLA	414	8.63

## Top Losers Weekly

Scrip	Price	% Chg
HINDCOPPER	153	27.87
VAIBHAVGEMS	92	8.28
HERITAGFOOD	487	7.91
KAVVERITEL	86	6.84
CREWBOSS	19	6.51

## Nifty Corner



<b>Support &amp; Resistance</b>						
<b>S3</b>	<b>S2</b>	<b>S1</b>	<b>Nifty</b>	<b>R1</b>	<b>R2</b>	<b>R3</b>
5650	5700	5800	5879	5950	6000	6100
<b>Moving Averages</b>						
<b>20DMA</b>		<b>50DMA</b>		<b>100DMA</b>		<b>200DMA</b>
5679		5677		5485		5335

## Market Commentary

The market settled at over 19-month closing high on hopes that the government would be able to push through a host of reforms measures during the current session of Parliament. Affirmative statement about the Indian economy from ratings agency Moody's also helped the market edge higher. The week's rally was also supported by news that Greece will get bailout fund from the troika of international lenders comprising the European Union, the European Central Bank and the International Monetary Fund (IMF). For the next week Nifty likely to trade in the range between 5950 - 6100 in the upper side and 5700 - 5650 in the lower side.

### Stocks at 52 wk High

Scrip	Cmp
ANANTRAJ	99
AXIABANK	1319
ASIANPAINT	4330
BAJAJCORP	228
BASF	730

### Stocks at 52 wk Low

Scrip	Cmp
AXISIT&T	70
GLODYNE	28
KEMROCK	56
KAVVERITEL	86
KIRINDUS	11.5

### FII Activity

Date	Figures in crore
26-11	163.14
27-11	1083.00
28-11	N.A.
29-11	1579.97
30-11	1611.43
NET	4437.54

### DII Activity

Date	Figures in crore
26-11	-195.66
27-11	-209.00
28-11	N.A.
29-11	-896.22
30-11	-798.63
NET	-2099.51

### Weekly Stock Idea

Scrip	B/S	Cmp	Tgt
RELAPTIAL	B	424	440
KALINDEE	B	90	98
TATAMETLIK	B	62	70
TALWALKAR	B	204	230
RELINFRA	B	485	510

Buy on dips & Sell on rise with Stop-loss of 3%

### Volume Breakout Stocks

Scrip	Cmp
HTMEDIA	103
TATAELXSI	242
JYOTHYLAB	186
PVR	298
FORTIS	112

### Week Ahead

#### **MAJOR RESULTS THIS WEEK:**

**03 DEC:** GEODESIC, SHLAKSHMI, TWILITIKA.

**04 DEC:** AMTEKAUTO, AMTEKINDIA.

**05 DEC:** MPHASIS.

**VISIT US AT: [WWW.INDIRATRADE.COM](http://WWW.INDIRATRADE.COM)**

#### **Disclaimer**

This report is for private circulation within the Indira Group. This report is strictly confidential and for information of the selected recipient only and may not be altered in any way, transmitted to, copied or distributed, in part or in whole, to any other person or to the media or reproduced in any form. This report should not be construed as an offer or solicitation to buy or sell any securities or any interest in securities. It does not constitute a personal recommendation or take into account the particular investment objectives, financial situations, or any such factor. The information, opinions estimates and forecasts contained here have been obtained from, or are based upon, sources we believe to be reliable, but no representation of warranty, express or implied, is made by us to their accuracy or completeness. Opinions expressed are our current opinions as of the date appearing on this material only and are subject to change without notice.